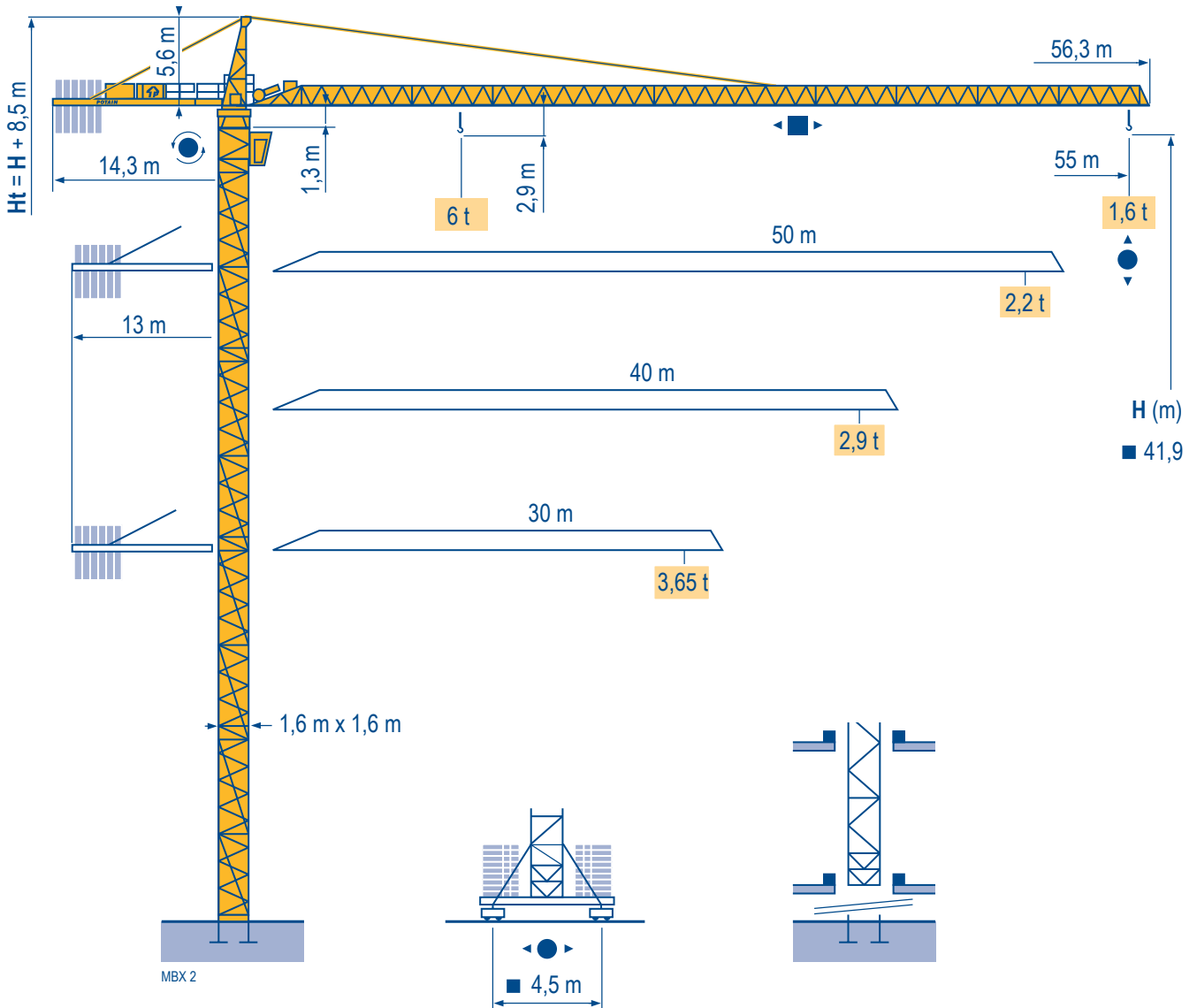


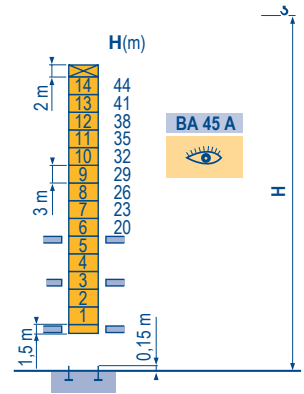
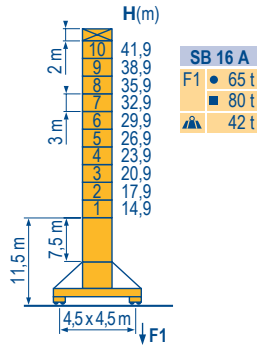
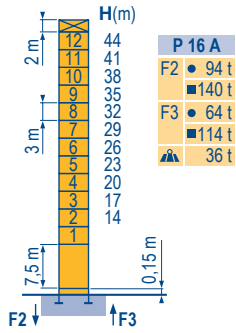
MC 115 B



Masts / Reactions

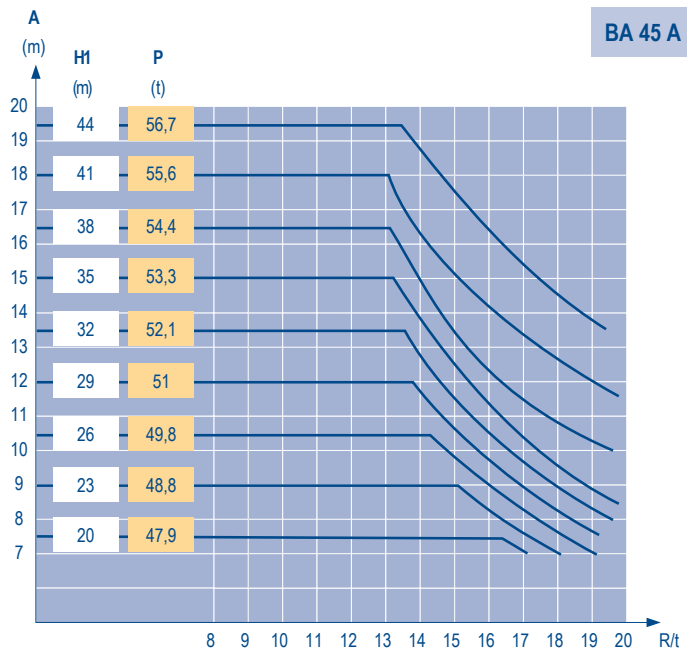
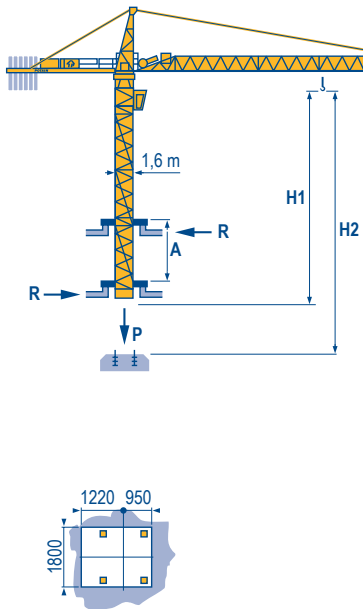
□ 1,6 m
 ▣ 30 m ⇒ 55 m

MBX 3



Climbing crane

MBX 2



CITY CRANE MC 115 B

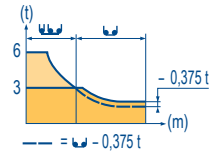
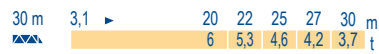
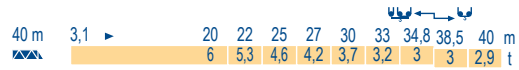
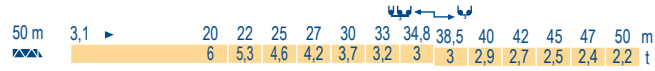
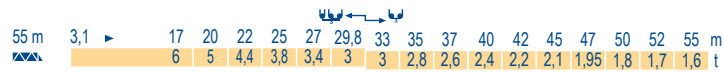


GB

- Reactions in service
- Reactions out of service
- ▲ Without load, ballast (or transport axles), with maximum jib and maximum height.
- 👁 See climbing crane

Load diagrams

MBX 1



Counter-jib ballast

MBX 2

▲▲▲	▲▲▲	3450 kg	2250 kg	▲▲ (kg)
55 m	14,3 m	4	1	16 050
50 m	13 m	4	1	16 050
40 m	13 m	4	-	13 800
30 m	13 m	2	2	11 400

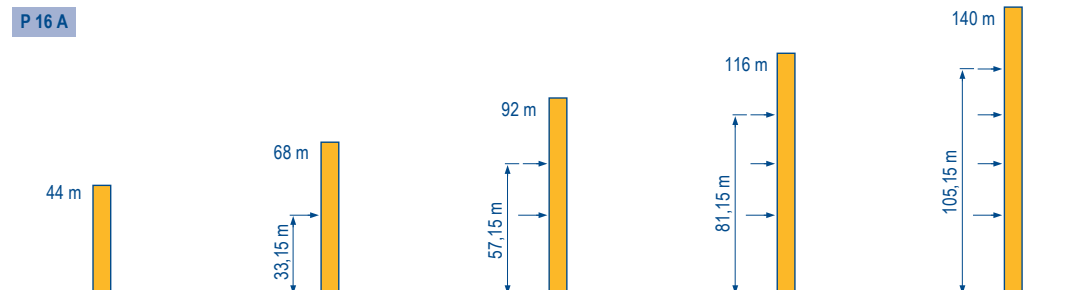
Base ballast

MBX 2

▣ 1,6 m	SB 16 A - ●	H (m)	41,9	38,9	35,9	32,9	29,9	26,9	23,9	20,9	17,9	14,9
		▲▲ (t)	84	72	60	42	42	42	42	42	42	42

Anchorage

MBX 1



CITY CRANE MC 115 B

POTAIN

GB

- A Distance between collars
- H1 Crane height
- P Crane weight (in service)
- R Horizontal reaction

Mechanisms

MBX 4

									hp	kW	
	33 PC 15	m/min	6,2	38	76	3,1	19	38	33	24	260 m
		t	3	3	1,5	6	6	3			
	45 RCS 15 GH	m/min	0 → 56		0 → 112	0 → 28		0 → 56	45	33	408 m
		t	3		1,5	6		3			
	4 D3 V3	m/min	15 - 30 - 58						4	3	
	RCV 145	rpm	0 → 0,8						2 x 6	2 x 4,4	
	SB 16 A RT 324 R ≥ 10 m	m/min	12,5 → 25						2 x 7	2 x 5,2	
CEI 38			IEC 38								
400 V (+6% -10%) 50 Hz			33 PC : 50 kVA 45 RCS : 65 kVA								

GB

- Hoisting
- Trolleying
- Slewing
- Travelling



This commercial document is not legally binding.
For any technical information, please refer to the corresponding instructions.

Manitowoc
Crane CARE

Manitowoc
Crane Group



Americas
Tel : +1 888 479 7278
Tel : +1 717 593 2000

Europe - Middle East - Africa
Tel : +33 (0) 4 72 81 50 00
Tel : +44 (0) 191 522 2000

Asia - Pacific
Tel : +65 6264 1188
Fax : +65 6862 4040

www.manitowoccrane.com

Manitowoc Crane Group Asia Pte Ltd
Manitowoc Crane Group
4 Kwong Min Road
Singapore 628707
Tel: +65 6264 1188
Fax: +65 6862 4040
www.manitowoccrane.com

MC 115 B
Réf. 2004 45 MBX 6

Copyright.Reproduction interdite © POTAIN 2004

Réalisation Secdoc