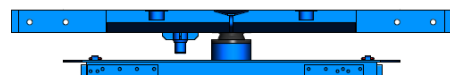
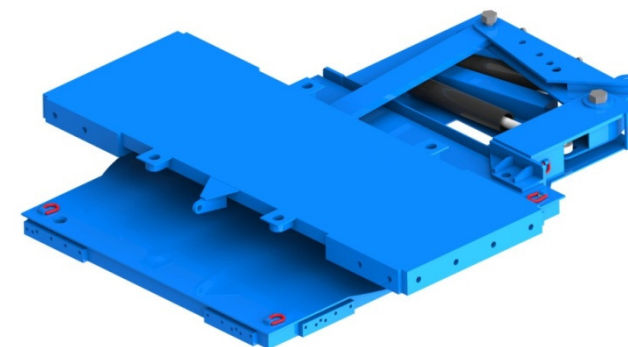


Turntable

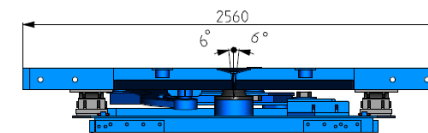
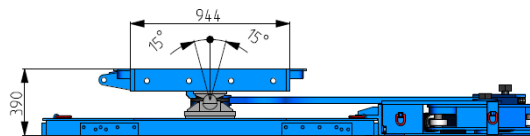
100 t

Datasheet:

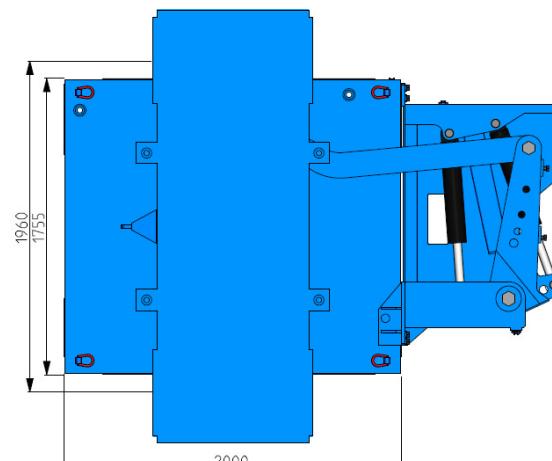
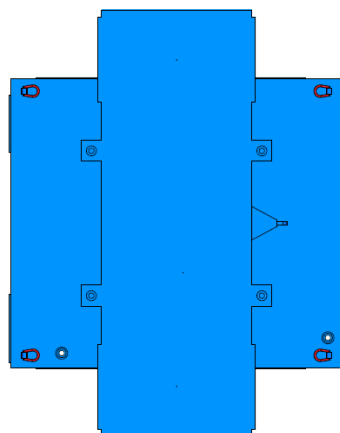
- 1 pair of turntables consisting of 2 units turntables
- Capacity of each turntable 100t
- Steel ball / socket joint between load table and distribution frame
- Protection against detaching of the load table
- Deadweight 2x approx. 1.700 kg
- 1 pair of sliding shoes for the rear turntable
- 4 thread bushings M36 arranged on the table in vertical direction
- 16 thread bushings M36 arranged around the table in horizontal direction
- Horizontal lashing point for mounting a steel rope as a connection to the opposite turntable
- 4 lashing rings LBS 1t on the load distribution frame
- 2 thread bushings M36 on the load distribution frame
- Fixation of distribution frame on the modular trailer by means of 1 pair of fixing bars
- Suitable for 3.000 mm and 2.750 mm wide modular trailers



without sliding shoes



with sliding shoes



Extra equipment:

- Self-steering device for the rear modular trailer, adjustable for different supporting distances, dead weight approx. 500 kg
- Screwable lashing rings VLBG 7t (LC = 14.000 daN) for proper load securing
- Connection hoses for brake system and electric cable for lighting system, length either 15m or 30m